

TREASURY MANAGEMENT STRATEGY 2021/22

1 Introduction

- 1.1 The Authority both borrows and invests substantial sums of money and is therefore exposed to financial risks including the loss of invested funds and the revenue effect of changing interest rates. The successful identification, monitoring and control of risk are therefore central to the Council's Treasury Management Strategy.
- 1.2 Treasury risk management for local authorities is conducted within the framework of the Chartered Institute of Public Finance and Accountancy's *Treasury Management in the Public Services: Code of Practice 2017 Edition* (the CIPFA Code) which requires each authority to approve a treasury management strategy before the start of each financial year. This report fulfils the Council's legal obligation under the Local Government Act 2003 to have regard to the CIPFA Code.
- 1.3 Investments held for service purposes or for commercial profit are considered in a different report, the Capital Strategy.
- 1.4 Should the assumptions on which this report is based change significantly, it may be necessary to seek approval to a revised Treasury Management Strategy. Such circumstances could include, for example, a large unexpected change in interest rates, or in the Authority's capital programme or in the level of investments made or borrowing required.

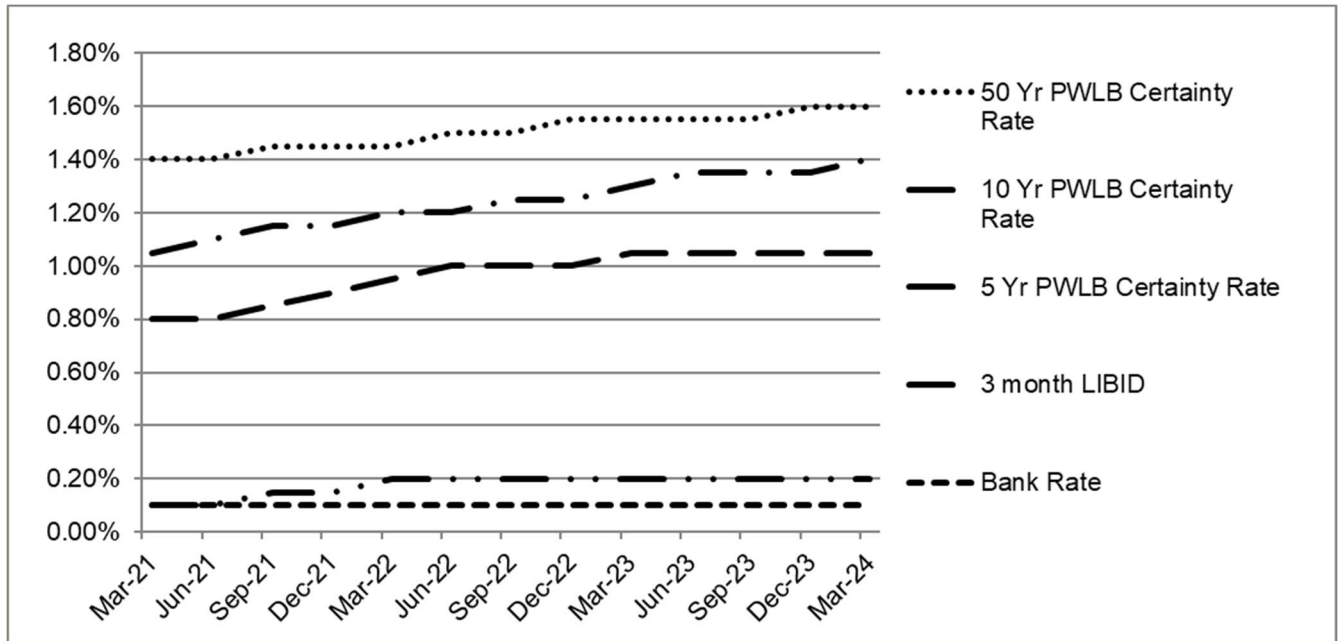
2 Economic Context, Credit Outlook and Interest Rates

- 2.1 The impact on the UK from coronavirus, lockdown measures, the rollout of vaccines, as well as the new trading arrangements with the European Union (EU), will remain major influences on the Authority's treasury management strategy for 2021/22.
- 2.2 The Bank of England (BoE) maintained Bank Rate at 0.10% in December 2020 and Quantitative Easing programme at £895 billion having extended it by £150 billion in the previous month. The Monetary Policy Committee (MPC) voted unanimously for both, but no mention was made of the potential future use of negative interest rates. In the November Monetary Policy Report (MPR) forecasts, the Bank expects the UK economy to shrink -2% in Q4 2020 before growing by 7.25% in 2021, lower than the previous forecast of 9%. The BoE also forecasts the economy will now take until Q1 2022 to reach its pre-pandemic level rather than the end of 2021 as previously forecast. By the time of the December MPC announcement, a COVID-19 vaccine was approved for use, which the Bank noted would reduce some of the downside risks to the economic outlook outlined in the November MPR.
- 2.3 UK Consumer Price Inflation (CPI) for November 2020 registered 0.3% year on year, down from 0.7% in the previous month. Core inflation, which excludes the more volatile components, fell to 1.1% from 1.5%. The most recent labour market data for the three months to October 2020 showed the unemployment rate rose to 4.9% while the employment rate fell to 75.2%. Both measures are expected to deteriorate further due to the ongoing impact of coronavirus on the jobs market, particularly when the various government job retention schemes start to be unwound in 2021, with the BoE forecasting unemployment will peak at 7.75% in Q2 2021. In October, the headline 3-month average annual growth rate for wages were 2.7% for total pay and 2.8% for regular pay. In real terms, after adjusting for inflation, total pay growth was up by 1.9% while regular pay was up 2.1%.

- 2.4 GDP growth rebounded by 16.0% in Q3 2020 having fallen by -18.8% in the second quarter, with the annual rate rising to -8.6% from -20.8%. All sectors rose quarter-on-quarter, with dramatic gains in construction (41.2%), followed by services and production (both 14.7%). Monthly GDP estimates have shown the economic recovery slowing and remains well below its pre-pandemic peak. Looking ahead, the BoE's November MPR forecasts economic growth will rise in 2021 with GDP reaching 11% in Q4 2021, 3.1% in Q4 2022 and 1.6% in Q4 2023.
- 2.5 GDP growth in the euro zone rebounded by 12.7% in Q3 2020 after contracting by -3.7% and -11.8% in the first and second quarters, respectively. Headline inflation, however, remains extremely weak, registering -0.3% year-on-year in November, the fourth successive month of deflation. Core inflation registered 0.2% y/y, well below the European Central Bank's (ECB) target of 'below, but close to 2%'. The ECB is expected to continue holding its main interest rate of 0% and deposit facility rate of -0.5% for some time but expanded its monetary stimulus in December 2020, increasing the size of its asset purchase scheme to €1.85 trillion and extended it until March 2022.
- 2.6 The US economy contracted at an annualised rate of 31.4% in Q2 2020 and then rebounded by 33.4% in Q3. The Federal Reserve maintained the Fed Funds rate at between 0% and 0.25% and announced a change to its inflation targeting regime to a more flexible form of average targeting. The Fed also provided strong indications that interest rates are unlikely to change from current levels over the next three years.
- 2.7 Former vice-president Joe Biden won the 2020 US presidential election. Mr Biden is making tackling coronavirus his immediate priority and will also be reversing several executive orders signed by his predecessor and take the US back into the Paris climate accord and the World Health Organization.
- 2.8 The credit ratings for many UK institutions were downgraded on the back of downgrades to the sovereign rating. Credit conditions more generally though in banks and building societies have tended to be relatively benign, despite the impact of the pandemic.
- 2.9 Looking forward, the potential for bank losses to be greater than expected when government and central bank support starts to be removed remains a risk, suggesting a cautious approach to bank deposits in 2021/22 remains advisable.
- 2.10 The Authority's treasury management adviser Arlingclose is forecasting that BoE Bank Rate will remain at 0.1% until at least the first quarter of 2024. The risks to this forecast are judged to be to the downside as the BoE and UK government continue to react to the coronavirus pandemic and the new EU trading arrangements. The BoE extended its asset purchase programme to £895 billion in November while keeping Bank Rate on hold and maintained this position in December. However, further interest rate cuts to zero, or possibly negative, cannot yet be ruled out but this is not part of the Arlingclose central forecast.
- 2.11 Gilt yields are expected to remain very low in the medium-term while short-term yields are likely remain below or at zero until such time as the BoE expressly rules out the chance of negative interest rates or growth/inflation prospects improve. The central case is for 10-year and 20-year to rise to around 0.60% and 0.90% respectively over the time horizon. The risks around the gilt yield forecasts are judged to be broadly balanced between upside and downside risks, but there will almost certainly be short-term volatility due to economic and political uncertainty and events.
- 2.12 The Council's latest interest rate forecast, reflecting advice from Arlingclose, is shown below.

The PWLB rates relate to potential long-term borrowing, and the LIBID (London Interbank Bid Rate) to short-term borrowing and investment.

This is a realistic view of potential rates, however it must be recognised that downside risks remain, and indeed appear heightened, in the near term, as the government reacts to the escalation in infection rates and the Brexit transition period comes to an end.



For the purpose of setting the budget for 2021/22, it was assumed that:

- any new investments would be at low rates, averaging around 0.05%,
- short-term borrowing would be available at an average of around 0.75% and
- new long-term loans would be available, if required, at rates around 1.50%.

3 Borrowing Strategy

3.1 At the end of December 2020 the Council held around £308.1M of borrowing:

Table 1: Existing Debt and Investment Portfolio Position

| | £m |
|--|--------------|
| Short-Term Debt – maturing 20/21 | 41.0 |
| Short-Term Debt – maturing 21/22 | 43.3 |
| Long-Term Debt | 147.8 |
| Lancashire County Council (LCC) Debt | 14.0 |
| Debt re PFI Arrangements | 62.1 |
| Gross Borrowings | 308.1 |
| This was offset by investments of: | 66.4 |
| Net Borrowing (gross borrowing less investments) | 241.7 |
| Net Borrowing (if LCC and PFI debt are excluded) | 165.6 |

3.2 The Council's CFR (Capital Financing Requirement) is the key measure of the Council's borrowing **need** in the long term. It is

the accumulated need to borrow **to finance capital spend** (not funded from grants, etc.)

LESS the accumulated Minimum Revenue Provision (MRP) charges already made - councils must make a prudent MRP charge in their accounts, to finance their debt –

LESS any capital receipts applied to finance outstanding debt.

The CFR tends to increase if capital spend financed from borrowing exceeds MRP.

3.3 Forecast changes in CFR and borrowing needs are shown in the table below:

Table 2: Balance Sheet Summary and Forecast

| | 31.3.20 Actual £m | 31.3.21 Estimate £m | 31.3.22 Forecast £m | 31.3.23 Forecast £m | 31.3.24 Forecast £m |
|---------------------------------------|-------------------------|---------------------------|---------------------------|---------------------------|---------------------------|
| General Fund CFR | 300.7 | 299.3 | 301.5 | 295.0 | 291.8 |
| Less: CFR re Other debt liabilities * | -84.8 | -84.5 | -84.2 | -83.8 | -83.4 |
| Loans CFR | 215.9 | 214.8 | 217.3 | 211.2 | 208.4 |
| Less: External borrowing ** | -149.9 | -145.7 | -141.8 | -138.2 | -134.9 |
| Internal borrowing | 66.0 | 69.1 | 75.5 | 73.0 | 73.5 |
| Less: Usable reserves *** | -41.6 | -58.7 | -53.2 | -50.2 | -48.2 |
| Plus/Minus: Working capital | 2.2 | 16.6 | -6.4 | -6.7 | 10.9 |
| Remaining Net borrowing NEED | 26.5 | 27.1 | 16.0 | 16.1 | 36.3 |

| Net borrowing NEED addressed by | |
|--|---------------------------|
| Short Term borrowing | 84.0 78.3 |
| Treasury Investments | -57.5 -51.2 |

* CFR regarding PFI liabilities and transferred debt that form part of the Council's total debt

** only loans to which the Council is committed over the longer term

*** includes schools balances and grants received in advance of need

The Council's usable reserves and working capital allow less borrowing to be taken than would otherwise be required. This is sometimes termed internal borrowing.

The Council's "Loans CFR" initially increases, due to the levels of prudential borrowing under its Capital Programme plans. Thereafter, unless the level of prudential borrowing is increased beyond current plans, it will start to fall in later years, as the level of MRP being made would then be larger than the increase in CFR resulting from additional spend financed from borrowing.

3.4 CIPFA's *Prudential Code for Capital Finance in Local Authorities* recommends that total debt should be lower than the highest forecast CFR over the next three years. The Council expects to comply with this recommendation during 2021/22.

3.5 The authority will continue to need to take borrowing in support of funding its capital programme. The chief objective when borrowing money is to strike an appropriately low risk balance between securing low interest costs and achieving certainty of those costs over the period for which funds are required.

3.6 Given the significant cuts to public expenditure and in particular to local government funding, the proposed borrowing strategy continues to address the key issue of affordability without compromising the longer-term stability of the debt portfolio. With short-term interest rates

currently much lower than long-term rates, it is likely to be more cost effective in the short-term to either use internal resources, or to borrow short-term loans instead. By doing so, the Council can reduce net borrowing costs (despite foregone investment income) and reduce overall treasury risk.

- 3.7 The benefits of internal and short-term borrowing will be monitored regularly against the potential for incurring additional costs by deferring borrowing into future years when long-term borrowing rates are forecast to rise modestly. Arlingclose will assist the Authority with this 'cost of carry' and breakeven analysis. Its output may determine whether the Authority borrows additional sums at long-term fixed rates in 2021/22 with a view to keeping future interest costs low, even if this causes additional cost in the short-term.
- 3.8 The Authority has previously raised much of its long-term borrowing from the PWLB, but will consider long-term loans from other sources including banks, pensions and local authorities, and will investigate the possibility of issuing bonds and similar instruments, in order to lower interest costs and reduce over-reliance on one source of funding in line with the CIPFA Code. PWLB loans are no longer available to local authorities planning to buy investment assets primarily for yield; if the Council was to undertake such activities, alternative long term funding options would need to be explored. It is likely that this would take longer to arrange, and the process would require additional resources to complete. The interest rates at which such borrowing could be obtained are uncertain but may be at rates higher than those currently available from the PWLB.
- 3.9 One alternative option is that the Council may arrange forward starting loans during 2020/21, where the interest rate is fixed in advance, but the cash is received in later years. This would enable certainty of cost to be achieved without suffering a cost of carry in the intervening period. The authority will continue to maintain a flexible approach to borrowing.
- 3.10 In addition, the Council may take further short-term loans to cover cash flow requirements.
- 3.11 The approved sources of long-term and short-term borrowing will be:
- Public Works Loan Board (PWLB) and any successor body
 - any institution approved for investments (see below)
 - any other bank or building society authorised to operate in the UK
 - any other UK public sector body
 - UK public and private sector pension funds (except the Lancashire County Council Fund)
 - capital market bond investors
 - UK Municipal Bonds Agency plc and other special purpose companies created to enable local authority bond issues

In addition, capital finance may be raised by the following methods that are not borrowing, but may be classed as other debt liabilities:

- leasing
- hire purchase
- Private Finance Initiative
- sale and leaseback

The Authority has previously raised much of its long-term borrowing from the PWLB but it continues to investigate other sources of finance, such as local authority loans and bank loans, which may be available at more favourable rates.

- 3.12 **Debt Rescheduling:** The PWLB allows authorities to repay loans before maturity and either pay a premium or receive a discount according to a set formula based on current interest rates. Other lenders may also be prepared to negotiate premature redemption terms. The Authority may take advantage of this and replace some loans with new loans, or repay loans without replacement, where this is expected to lead to an overall cost saving or a reduction in risk.
- 3.13 The Council still has £13M of LOBO (Lender's Option Borrower's Option) loans where the lender has the option to propose an increase in the interest rate at set dates, following which the Council has the option to either accept the new rate or to repay the loan at no additional cost. £8M of these LOBOs have options which may be exercised during 2021/22, and although the Authority understands that lenders are unlikely to exercise their options in the current low interest rate environment, there remains an element of refinancing risk. The Authority may take the option to repay LOBO loans at no cost if it has the opportunity to do so. It is not currently expected that the Council will take any further LOBO loans - however in order to allow for some flexibility, the Council will limit its total exposure to LOBO loans to £25M.
- 3.14 The UK Municipal Bonds Agency plc was established in 2014 by the Local Government Association as an alternative to the PWLB. Blackburn with Darwen BC was one of a number of local authorities investing in the Agency to help to establish it. It issues bonds on the capital markets and lends the proceeds to local authorities.

This is a more complicated source of finance than the PWLB for two reasons:

- (a) borrowing authorities will be required to provide bond investors with a guarantee to refund their investment in the event that the agency is unable to for any reason; and
- (b) there will be a lead time of several months between committing to borrow and knowing the interest rate payable.

Any decision to borrow from the Municipal Bonds Agency will be subject to a separate report to Executive Board.

4 Treasury Investment Strategy

- 4.1 On a day-to-day basis the Council can hold significant surplus funds representing income received in advance of expenditure requirements, in addition to balances and reserves held. In the past 12 months, the Council's treasury investment balance has ranged from £20 million to £110 million, reflecting in particular the profiles of capital spending, grant funding, short-term borrowing levels and long-term debt repayments. Treasury investment levels are expected to reduce over the forthcoming year.
- 4.2 Both the CIPFA Code and the MHCLG Guidance require the Council to invest its funds prudently, and to have regard to the **security** and **liquidity** of its investments before seeking the highest rate of return, or **yield**. The Council's objective when investing money is to strike an appropriate balance between risk and return, minimising the risk of incurring losses from defaults and the risk of receiving low investment income. Where balances are expected to be invested for more than one year, the Council will try, whilst balancing the above, to achieve a total return that is equal or higher than the prevailing rate of inflation, in order to maintain the spending power of the sum invested.
- 4.3 The COVID-19 pandemic has increased the risk that the Bank of England will set its Bank Rate at or below zero, which is likely to feed through to negative interest rates on all low risk, short-term investment options. Since investments cannot pay negative income, negative rates will be applied by reducing the value of investments. In this event, security will be measured as receiving the contractually agreed amount at maturity, even though this may be less than the amount originally invested.

- 4.4 The Council uses a cash flow model to determine the period for which funds may prudently be committed. The forecast is compiled on a prudent basis, to minimise the risk of the Council being forced to borrow on unfavourable terms to meet its financial commitments. Furthermore, a prudent level of funds is maintained in 'instant access' investments, to cover most likely eventualities. However to mitigate risk further, it is possible to borrow funds to cover short-term needs.
- 4.5 The Authority will spread its liquid cash over at least four providers (e.g. bank accounts and money market funds) to ensure that access to cash is maintained in the event of operational difficulties at any one provider.
- 4.6 Given the increasing risk and very low returns from short-term unsecured bank investments, the Authority aims to diversify into secure higher yielding asset classes during 2021/22. This is especially the case for amounts estimated to be available for longer-term investment. All of the Authority's surplus cash is currently invested in short-term unsecured bank deposits and money market funds along with fixed term deposits with other local authorities and the Debt Management Office (DMO). This diversification will represent a change in strategy over the coming year, however the security of the investments will be the primary consideration in line with the measures outlined below.
- 4.7 In order to prioritise the security of investments, the Council sets limits on the amounts placed with different institutions and as to the duration of the investment. This is to maintain a diversified investment portfolio and to align amounts and durations of investments to the perceived risks associated with different counterparties.
- 4.8 When deteriorating financial market conditions affect the creditworthiness of all organisations, as happened in 2008 and 2020, this is not generally reflected in credit ratings, but can be seen in other market measures. In these circumstances, the Authority will restrict its investments to those organisations of higher credit quality and reduce the maximum duration of its investments to maintain the required level of security. The extent of these restrictions will be in line with prevailing financial market conditions. If these restrictions mean that insufficient commercial organisations of high credit quality are available to invest the Authority's cash balances, then the surplus will be deposited with the UK Government, or with other local authorities. This will cause investment returns to fall but will protect the principal sum invested.
- 4.9 The Council uses credit ratings from all the three main rating agencies (Fitch Ratings Ltd, Moody's Investors Service Ltd and Standard & Poor's Financial Services LLC) to assess the risk of loss of investments. The lowest available credit rating will be used to determine credit quality. In order to make the limits straightforward to manage, limits are based on the Long-term ratings, as these ratings are those that address credit risk directly. Long-term ratings are expressed on a scale from AAA (the highest quality) through to D (indicating default). Ratings of BBB- and above are described as investment grade.

The ratings are obtained and monitored by the Council's Treasury Advisers, Arlingclose, who will notify the Council of changes as they occur.

- 4.10 Credit ratings are a significant factor in assessing the creditworthiness of organisations however the Council understands that they are not perfect predictors of investment default. Full regard will be given to other available information on the credit quality of banks and building societies, including credit default swap prices, financial statements, information on potential government support, reports in the quality financial press and analysis and advice from the Authority's treasury management adviser. No investments will be made with an organisation if there are substantive doubts about its credit quality, even though it may meet the specified criteria.

4.11 Investment limits are applied at the point at which new investments are made. They are set at cautious levels, allowing for the fact that circumstances may change while investments run their course

It is proposed that if the investment criteria for a counterparty are no longer met, then:

- no new investments will be made,
- any existing investments that can be recalled at no cost will be recalled and
- full consideration will be given to the recall or sale of all other existing investments with the affected counterparty.

4.12 Where a credit rating agency announces that a credit rating is on review for possible downgrade (also known as “negative watch”), so that it may fall below the approved rating criteria, then only investments that can be withdrawn on the next working day will be made with that organisation until the outcome of the review is announced. This policy will not apply to negative outlooks, which indicate a long-term direction of travel rather than an imminent change of rating.

Where a credit rating agency awards a different rating to a particular class of investment instrument as opposed to the credit rating of the counter-party as a whole, the Council will base its investment decisions on the instrument credit rating rather than the counterparty credit rating.

4.13 Treasury Investment Criteria for 2021/22

The proposed criteria are at essentially the same levels as were agreed for last year. It is proposed that the Council may invest its surplus funds with any of the counterparty types in the table immediately below, subject to the cash and time limits shown and to other limits also set out successively below.

| Approved Investment Counterparties | Time Limit | Cash Limit | Sector Limit |
|---|------------|------------|-----------------------------------|
| The UK Government | 50 years | Unlimited | N/A |
| Local Authorities* & Other Government Entities | 364 days | £5M each | Unlimited |
| <i>* as defined in the Local Government Act 2003</i> | | | |
| Banks and Building Societies – Secured | | | |
| long-term credit ratings no lower than AA- (or equivalent) | 364 days | £5M each | Unlimited |
| long-term credit ratings no lower than AA (or equivalent) | 364 days | £4M each | |
| long-term credit ratings no lower than A- (or equivalent) | 364 days | £3M each | |
| Banks and Building Societies – Unsecured | | | |
| long-term credit ratings no lower than AA- (or equivalent) | 9 months | £5M each | Banks – Unlimited |
| long-term credit ratings no lower than AA (or equivalent) | 6 months | £4M each | |
| long-term credit ratings no lower than A- (or equivalent) | 4 months | £3M each | Building societies - £6M in total |
| The Council’s current account banker – provided long-term credit rating no lower than BBB- (or equivalent) | next day | £3M each | |
| Corporates or Registered Providers with long-term credit ratings no lower than A- (or equivalent) | 4 months | £3M each | £5M in total |
| Money Market Funds | | | |
| long-term credit ratings no lower than A- (or equivalent) | N/A | £5M each | Unlimited |
| unrated or long-term credit ratings under A- (or equivalent) | N/A | £4M each | |
| Strategic Pooled Funds and Real Estate Investment Trusts (incl. money market funds) | | | |
| long-term credit ratings no lower than A- (or equivalent) | N/A | £5M each | £10m in total |
| unrated or long-term credit ratings under A- (or equivalent) | N/A | £4M each | |

| Other Investment Limits | Cash Limits |
|--|--|
| Any group or organisation under the same ownership | Group or overall limit same as would be set for parent company |
| Foreign Countries – limited to those with sovereign credit rating of AA+ or better (from all agencies) | £5M each |
| UK investments will not be limited by the UK's sovereign credit rating | |
| Investments in pooled funds and multilateral development banks do not count against the limit for any single foreign country, since the risk is diversified over many countries. | |

4.14 **Government:** Loans to, and bonds and bills issued or guaranteed by, national government, regional and local authorities and multilateral development banks. These investments are not subject to bail-in, and there is generally a lower risk of insolvency, although they are not zero risk. Investments with the UK Government are deemed to be zero credit risk due to its ability to create additional currency and therefore may be made in unlimited amounts for up to 50 years.

4.15 **Secured investments:** Investments secured on the borrower's assets, which limits the potential losses in the event of insolvency. The amount and quality of the security will be a key factor in the investment decision. Covered bonds and reverse repurchase agreements with banks and building societies are exempt from bail-in. Where there is no investment specific credit rating, but the collateral upon which the investment is secured has a credit rating, the higher of the collateral credit rating and the counterparty credit rating will be used. The combined secured and unsecured investments with any one counterparty will not exceed the cash limit for secured investments.

4.16 **Banks and building societies (unsecured):** Accounts, deposits, certificates of deposit and senior unsecured bonds with banks and building societies, other than multilateral development banks. These investments are subject to the risk of credit loss via a bail-in should the regulator determine that the bank is failing or likely to fail.

Unsecured investments with banks rated below A- (but no lower than BBB-) will be restricted to overnight deposits with the Council's Current Account bank, if applicable. A high level of monitoring of the credit-worthiness of the Current Account banker will be maintained if its ratings fall this low and this option will not be taken up if there are concerns.

In addition to investment balances, the Council may incur operational exposures, for example through current accounts, collection accounts and merchant acquiring services. These are not classed as investments, but are still subject to the risk of a bank bail-in, and balances will therefore be monitored and minimised, so far as practicable. The Bank of England has stated that in the event of failure, banks with assets greater than £25 billion are more likely to be bailed-in than made insolvent, increasing the chance of the Authority maintaining operational continuity.

4.17 **Registered providers (unsecured):** Loans to, and bonds issued or guaranteed by, registered providers of social housing or registered social landlords, formerly known as housing associations. These bodies are tightly regulated by the government and, as providers of public services, they retain a likelihood of receiving government support if needed.

4.18 **Corporates:** this covers loans, bonds and commercial paper issued by companies other than banks and registered providers. These investments are not subject to bail-in but are exposed to the risk of the company going insolvent.

- 4.19 **Money market funds:** Pooled funds that offer same-day or short notice liquidity and very low or no price volatility by investing in short-term money markets. They have the advantage over bank accounts of providing wide diversification of investment risks, coupled with the services of a professional fund manager in return for a small fee. Although no sector limit applies to money market funds, the Authority will take care to diversify its liquid investments over a variety of providers to ensure access to cash at all times.
- 4.20 **Strategic pooled funds:** Bond, equity and property funds that offer enhanced returns over the longer term but are more volatile in the short term. These allow the Authority to diversify into asset classes other than cash without the need to own and manage the underlying investments. Because these funds have no defined maturity date, but are available for withdrawal after a notice period, their performance and continued suitability in meeting the Authority's investment objectives will be monitored regularly.
- 4.21 **Real estate investment trusts:** Shares in companies that invest mainly in real estate and pay the majority of their rental income to investors in a similar manner to pooled property funds. As with property funds, REITs offer enhanced returns over the longer term, but are more volatile especially as the share price reflects changing demand for the shares as well as changes in the value of the underlying properties. Investments in REIT shares cannot be withdrawn but can be sold on the stock market to another investor.

4.22 Strategy for 2021/22

Cash flow surpluses can be considered as falling into three categories -

- (a) **Short-term funds** that are required to meet cash flows occurring in the next month or so, and for which the preservation of capital and liquidity is therefore of paramount importance. Generating investment returns is of limited concern here, although should not be ignored. Instant access AAA-rated money market funds and bank deposit accounts will be the main methods used to manage short-term cash.
- (b) **Medium-term funds** that may be required in the next one to twelve months will be managed concentrating on security, with less importance attached to liquidity but a slightly higher emphasis on yield. The majority of investments in this period will be in the form of fixed term deposits with banks and building societies. A spread of counterparties and maturity dates will be maintained to maximise the diversification of credit and interest rate risks.
- (c) **Long-term funds** that are not required to meet any liquidity need and can be invested with a greater emphasis on achieving higher returns. Security remains fundamental however, as any losses from defaults will impact on the total return. Liquidity is of lesser concern, although it should still be possible to sell investments with due notice if large cash commitments arise unexpectedly. This is where a wider range of instruments, including structured deposits, certificates of deposit, gilts, corporate bonds and pooled funds in bond, equity and property funds, which could be used to diversify the portfolio.

The overall Investment Strategy will be to prioritise security of funds and maintain a mix of short-term (largely instant access) and medium-term investments to generate investment income as market conditions permit. As the Council expects to have funds available for long-term investment, the Council will consider its options for such funds, including potential investment in strategic pooled funds.

With short-term interest rates still significantly lower than long-term rates, due consideration will also be given to continuing to use surplus funds to defer making long-term borrowing or even make early repayments of long-term borrowing. In addition to the savings on the interest

rate differential, this strategy will also reduce the Council's exposure to credit risk and interest rate risk. In the context of the borrowing strategy, it is likely that most investments will continue to be in instant access and short-term deposits, to manage the Council's liquidity.

The counterparty limits set out above, do allow for a wider range of investment opportunities to be taken up than have been used by the Council to date. Should the circumstances arise under which this would be appropriate, this would allow an increased diversification of the overall portfolio and in some instances, increase the security of investments made. The take up of any new investment opportunities will be closely managed by Officers in the Treasury Management Group, following advice given by the Council's Treasury Management Advisers.

5 Budget Implications

5.1 Excluding PFI costs (which are offset by Government grant funding), the budget for debt interest payable in 2021/22 is £6.5 million (including the interest element of payments to LCC for debt managed on our behalf), reflecting:

- (a) £5.9 million interest payable, at an average interest rate of around 3.7%, on the long-term debt portfolio (forecast to average £154 million over the year),
- (b) up to £0.6 million for short-term borrowing, at interest rates averaging 0.75%.

Projected investment income in 2021/22 is around £15,000, based on an average investment portfolio of circa £23 million, and interest rates averaging 0.05%.

If actual levels of investments and borrowing and/or actual interest rates differ from those forecast, performance against budget will be correspondingly different.

6 Using Derivatives

6.1 Local authorities have previously made use of financial derivatives embedded into loans and investments both to reduce interest rate risk (e.g. interest rate collars and forward deals) and to reduce costs or increase income at the expense of greater risk (e.g. LOBO loans and callable deposits). The general power of competence in section 1 of the *Localism Act 2011* removes much of the uncertainty over local authorities' use of standalone financial derivatives (i.e. those that are not embedded into a loan or investment).

6.2 The Authority will only use standalone financial derivatives (such as swaps, forwards, futures and options) where they can be clearly demonstrated to reduce the overall level of the financial risks that the Authority is exposed to. Additional risks presented, such as credit exposure to derivative counterparties, will be taken into account when determining the overall level of risk. Embedded derivatives, including those present in pooled funds and forward starting transactions, will not be subject to this policy, although the risks they present will be managed in line with the overall treasury risk management strategy.

6.3 Financial derivative transactions may be arranged with any organisation that meets the approved investment criteria, assessed using the appropriate credit rating for derivative exposures. An allowance for credit risk calculated using the methodology in the Treasury Management Practices document will count against the counterparty credit limit and the relevant foreign country limit.

6.4 In line with the CIPFA Code, the Authority will seek external advice and will consider that advice before entering into financial derivatives to ensure that it fully understands the implications.

7 Treasury Management Indicators

The Council measures and manages its exposures to treasury management risks using the following indicators:

Refinancing Risk - Maturity Structure of Borrowing

This indicator is set to control the Council's exposure to refinancing risk - i.e. to prevent too much debt maturing at any one time, with a risk the Council will have to refinance at the rates then prevailing. The limits for up to 24 months continue to be relaxed to allow for a higher level of short-term borrowing.

The upper and lower limits on the maturity structure of fixed rate borrowing will be:

| | Upper | Lower |
|--------------------------------|-------|-------|
| Under 12 months | 50% | 0% |
| 12 months and within 24 months | 30% | 0% |
| 24 months and within 5 years | 30% | 0% |
| 5 years and within 10 years | 30% | 0% |
| 10 years and above | 95% | 25% |

This indicator applies to the financial years 2021/22, 2022/23, and 2023/24, from the first day of each financial year. The maturity date of borrowing is the earliest date on which the lender can demand repayment. Where there is a prospect that a LOBO may be called, this has been reflected in setting these limits.

Principal Sums Invested for Periods Longer than a Year

The purpose of this indicator is to control the Council's exposure to the risk of incurring losses by seeking early repayment of its investments. The limits on the total principal sum invested to final maturities beyond the period end will be:

| | 2021/22 £M | 2022/23 £M | 2023/24 £M |
|---|---------------|---------------|---------------|
| Limit on principal invested beyond year end | 7.0 | 5.0 | 3.0 |

The Indicators above are "standard" Treasury Management Indicators that are generally adopted by local authorities, in line with individual circumstances. These indicators have not directly addressed the key treasury priorities of Security and Liquidity, though these issues are already closely tracked throughout the year. However, working in conjunction with the Council's Treasury Advisers, options for the formal monitoring of performance in regard to these priorities remain under consideration.

Interest Rate Risk

CIPFA has withdrawn the previous recommendation for standard indicators for Upper Limits on Fixed and Variable Interest Rate Risk. Nonetheless, this Council recognises that it must have regard to the risk that fluctuations in interest rates could create an unexpected burden on its finances, and will therefore continue to monitor its exposure to Fixed and Variable Interest Rate Risk. In addition, without setting a formal limit, this Council will also monitor, on an ongoing basis, the potential impact of a 1% change in interest rates on its current borrowing and investment portfolio.

The upper limits on fixed and variable rate interest rate exposures, expressed as an amount of net principal borrowed will be:

| | 2021/22 £M | 2022/23 £M | 2023/24 £M |
|---|---------------|---------------|---------------|
| Upper limit on Fixed Interest rate exposures | 245.3 | 227.4 | 212.6 |
| Upper limit on Variable Interest rate exposures | 108.6 | 100.1 | 93.1 |

8 Other Matters

Markets in Financial Instruments Directive (MiFID)

The Authority has opted up to professional client status with its providers of financial services, including advisers, brokers and some fund managers, allowing it access to a greater range of services but without the greater regulatory protections afforded to individuals and small companies. Given the size and range of the Authority's treasury management activities, the Director of Finance believes this to be the most appropriate status.

9 Other Options Considered

The MHCLG Investment Guidance and the CIPFA Code of Practice do not prescribe any particular treasury management strategy for local authorities to adopt.

Some alternative strategies, with their financial and risk management implications, are listed below.

| Alternative | Impact on income and expenditure | Impact on risk management |
|---|--|---|
| Invest in a narrower range of counterparties and/or for shorter times | Interest income will be lower | Lower chance of losses from credit related defaults, but any such losses may be greater |
| Invest in a wider range of counterparties and/or for longer times | Interest income will be higher | Increased risk of losses from credit related defaults, but any such losses may be smaller |
| Borrow additional sums at long-term fixed interest rates | Debt interest costs will rise; this is unlikely to be offset by higher investment income | Higher investment balance leading to a higher impact in the event of a default; however long-term interest costs may be more certain |
| Borrow short-term or variable loans instead of long-term fixed rates | Debt interest costs will initially be lower | Increases in debt interest costs will be broadly offset by rising investment income in the medium term, but long-term costs may be less certain |
| Reduce level of borrowing | Saving on debt interest is likely to exceed lost investment income | Reduced investment balance leading to a lower impact in the event of a default; however long-term interest costs may be less certain |

The Director of Finance, having consulted with the Executive Member for Finance and Governance, believes that the above strategy represents an appropriate balance between risk management and cost effectiveness.